

Max Compact Exterior Projects



For you to create



www.fundermax.com

Fundermax





4	Single-Family-House
10	Residential complex
16	Office building
24	Industrial building
30	Hotels
40	Educational institution
46	Products

Original inspirational.

Architecture is more than purpose. It is language, feeling, expression – and at the same time restricted to the realm of what is possible. With a variety of innovative designs, FunderMax opens up whole new worlds of architectural freedom and paves the way from the first idea to its final realization. The original delivers on its promise.

This brochure shows you what architects have created so far with FunderMax: multifaceted, authentic and colorful. Let yourself be inspired to also give your buildings character!

www.fundermax.com







Photos: Frenchie Cristogati





**Privat residence Monts d'Or
France, Lyon**

Architect D.P.L.G. Laurent Guillard-Lozanne
Surface NT
Decor 0085



Single-Family-House
Hungary, Törökbálint

Architect Toth Project
Surface NG
Decors 0070, 0742



Privat Residence Jade
USA, North Wildwood

Architect E/L Studio Washington DC
Surface NT
Decors 0080, 0085, 0662



Photo: EL Studio

Single-Family-House
Hungary, Mosonmagyaróvár

Architect Tóth Project Architect Office
Surface NT
Decor 0798



Photo: Batár Zsolt





Photos: C+B Architecte, Serge Botello

Les Lofts de la Baume
France, La Valette-du-Var

Architect Serge Botello (C + B Architecte)

Surface NT

Decor AUTN

Photos: Jordi Surroca



Residential Building
Spain, Barcelona

Architect Roldán y Berenguer
Surface NT
Decors 0026, 0027



Photo: Alumina Elit 2003 EOOD



**Residential Complex Geshov
Bulgaria, Sofia**

Architect Arch. Zvetan Petrov – Studio Ivo
Petrov Architects

Installer Alumina Elit 2003 EOOD

Surface NT

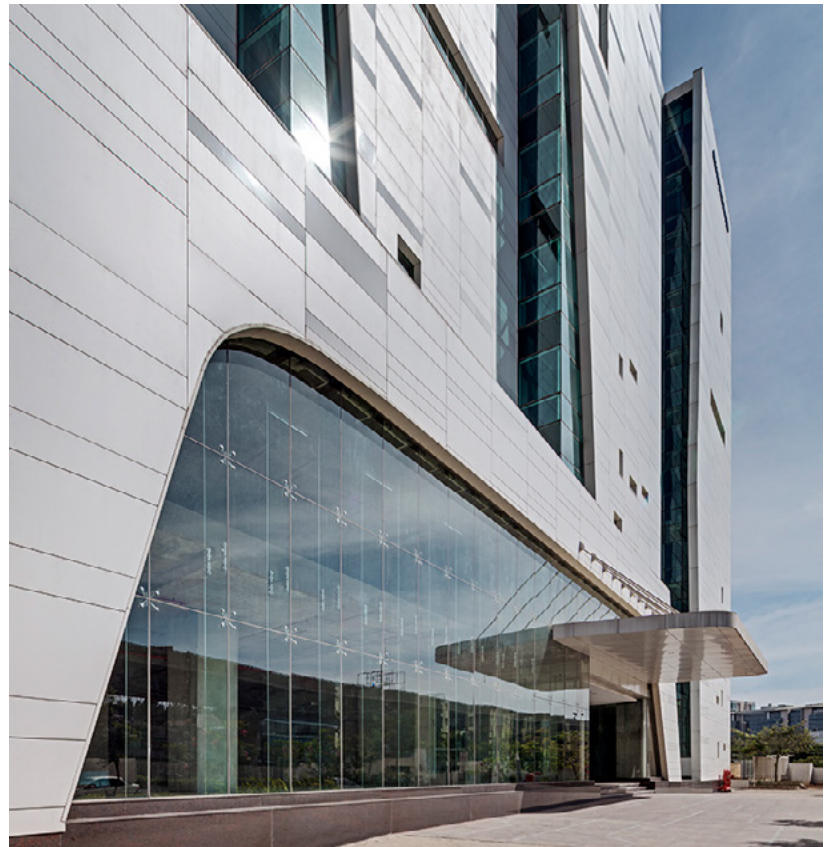
Decor O923

Photo: Vilmestos projektai



Residential Complex Vilmesta
Lithuania, Vilnius

Installer Exterus
Surface NT
Decors 0077, 0693, 0661



Sattva Galleria
India, Hebbal

Architect Sudhakar Pai
Surfaces NG, NT
Decor 0085



Photo: Architecturbüro Ternes





Energy-Efficient house with e-mobility
Germany, Koblenz

Architect Ternes Architekten BDA
Surface NT
Decor 0091

Oficinas Indar
Spain, Beasain

Architect Jesus Jauregui
Surface NT
Decors O159, ID





Sparkasse Bühl
Germany, Ottersweier

Architect Michael Frank
Surface NT
Decor O674



Genesis France
France, Saint-Étienne-du-Rouvray

Architect Ataub Architectes
Surface NG
Decors 0080, 0085



Photo: Grégoire Auger



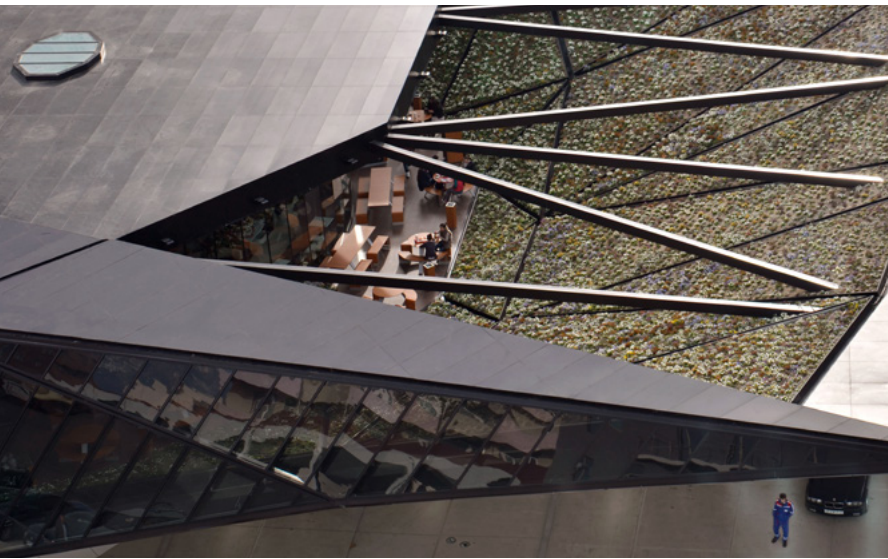
Photo: Michael Frank



Photo: Anand Jaju Photography

**Electronic City
India, Bangalore**

Architect PN Architects
Surface NT
Decor 0794



Photos: Giorgi Khmaladze



McDonald's
Georgia, Batumi

Architect Ataub Architectes
Surface NT
Decors 0080, 0085



Photos: Yohan Zerdoun





Fire Department Rimsingen
Germany, Rimsingen

Architect Roller Architekten
Surface NT
Decors 0741, 0742, 0074, 0085



Photos: Francisco Manosalvas





**Furniture store Residenza
Dominican Republic**

Architect Patricia Sención
Surface NT
Decors AUTN, 0427

Photos: Hannes Kohlmeier





PRO-GE House Krumpendorf
Austria, Krumpendorf

Architect DI Andreas Krainer
Surface NT
Decor O161





Casa de Uco
Argentina, Mendoza

Architect Alberto Tonconogy
Surface NT
Decor 0160

Photos: Estudio Alberto Tonconogy

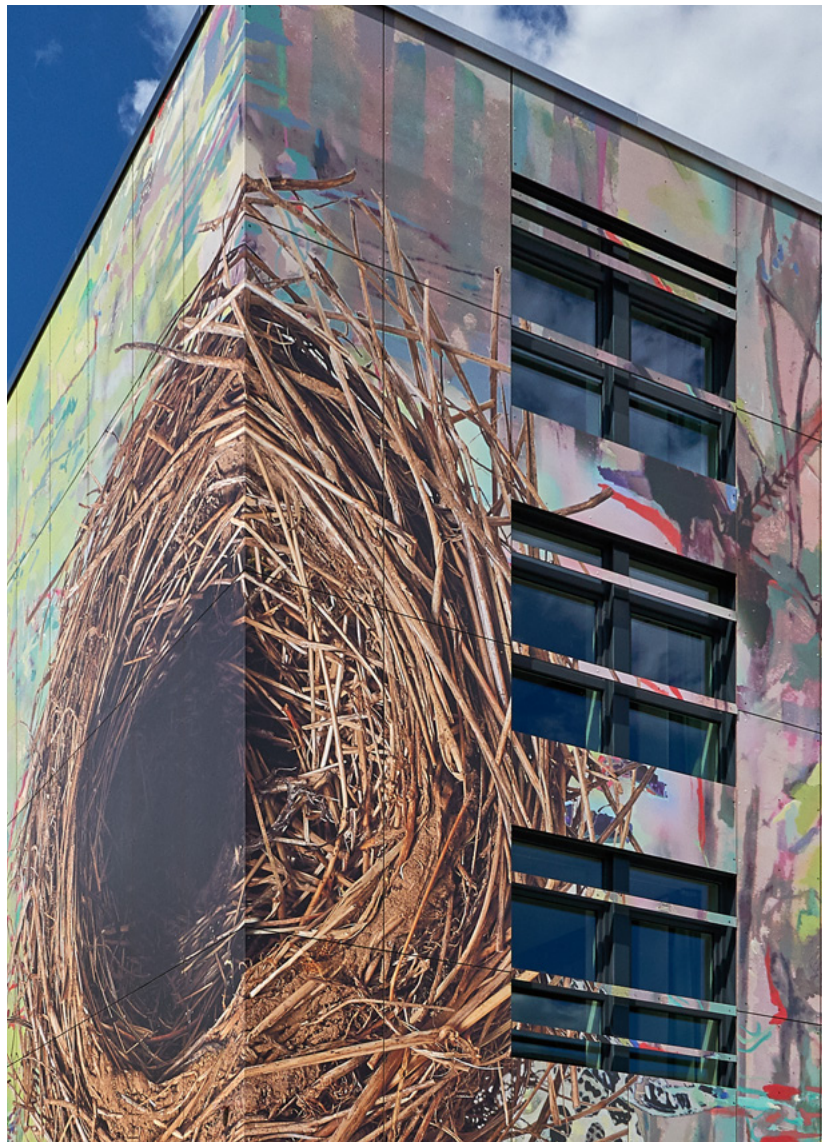
Copyright: thyssenkrupp Plastics GmbH; Design ID-Dekor: Anna Appadoo







Copyright: thyssenkrupp Plastics GmbH; Design ID-Decor: Anna Appadoo

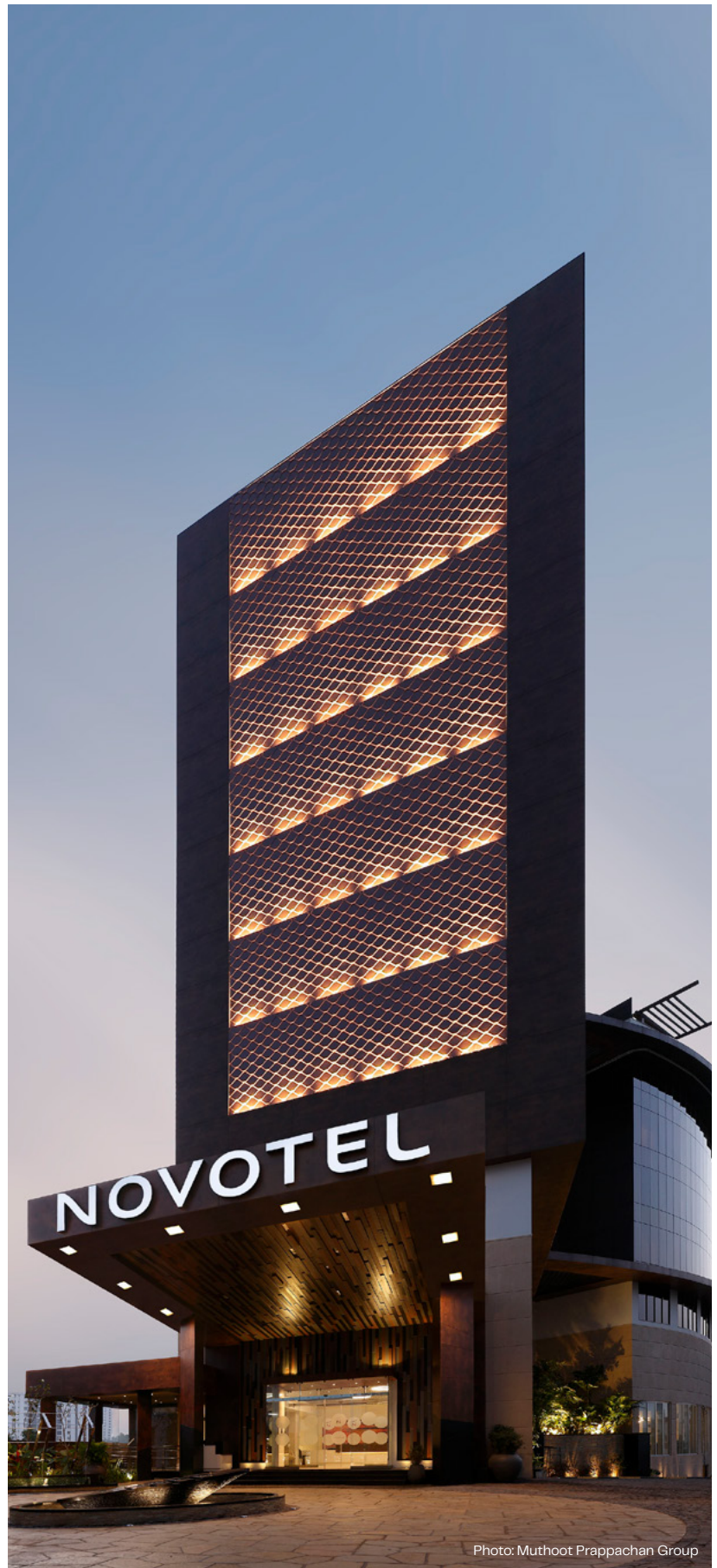


Boarding House 7THINGS
Germany, Bremen

Installer Kohlmeyer Fassadenbau GmbH
Surface NT
Decors ID, 0070

**Novotel
India, Kochi**

Architect Naveen Sam
Surface NT
Decor 0429





Novum Hotel Niu Essen
Deutschland, Essen

Architect Europa-Center AG
Surface NY
Decor O496





Children's Home Jöhlingen
Germany, Walzbachtal

Architect Peter Langenhahn
Surface NT
Decor 5171



Photos: John Gawley





Learning Community Center
USA, North Omaha

Architect RDG Planning and Design
Surface NT
Decors 0717, 0237, 0725, 0712





**Elementary School
Austria, Kronstorf**

Architect Eder ZT GmbH
Surface NT
Decor ID



What Max Compact Exterior can do

Max Compact Exterior panels are duromer high-pressure laminates (HPL) in accordance with EN 438-6 Type EDF that are produced in lamination presses under great pressure and high temperature.

Double-hardened acrylic PUR resins provide extremely effective weather protection that is particularly suitable for longlasting balconies and facade claddings.



Properties*:

- Weather resistant to EN ISO 4892-2
- Lightfast acc. to EN ISO 4892-3
- Double hardened
- Scratch resistant
- Solvent resistant
- Hail resistant
- Easy to clean
- Impact resistant EN ISO 178
- Suitable for all exterior applications
- Decorative
- Bending resistant EN ISO 178
- Frost and heat resistant
- Constant temperature load
- -80 °C to 80 °C
- Easy to install

* Standard- und Actual-Values you will find on our website
www.fundermax.com

Max Compact Exterior F-Quality

Max Compact Exterior is a high-quality construction product which is used especially for long-lasting balcony and facade claddings. Max Compact Exterior panels are duromer highpressure laminates (HPL) in accordance with EN 438-6 Type EDF with extremely effective weather protection. This weather protection consists of double-hardened acrylic poly-urethane resins. They are produced in lamination presses under great pressure and at high temperatures. Max Compact Exterior panels are, of course, labelled with the CE-Mark necessary for their use in building applications.

Surfaces

NT

NH (Hexa)/NT (format 4100 x 1854 mm only)

NG* (Gloss)/NG (Gloss) (format 4100 x 1300 mm only)

NY (SKY)/NT (format 4100 x 1300 mm only, thicknesses 6 mm and 8 mm, limited decor range)

Formats (production sizes)

9'2 1/4" x 4' 3" = 39.25sf (2800 x 1300 mm)

13' 5 1/8" x 4' 3" = 57.44 sf (4100 x 1300 mm)

9'2 1/4" x 6' 5/8" = 55.79 sf (2800 x 1854 mm)

13' 5 1/8" x 6' 5/8" = 81.65 sf (4100 x 1854 mm)

To get a perfect design of the facade cladding with NG surface it is recommended to glue the panels on an aluminium-subconstruction. Subconstruction like wood do not have the right properties to avoid a wavy appearance of the cladding.

Core

F-Quality, flame-retardant, colour brown

Thicknesses

Panels with double-sided decor:

Thicknesses Tolerances (EN 438-6, 5.3)

2.0 - 2.9 mm ± 0.2 mm

3.0 - 4.9 mm ± 0.3 mm

5.0 - 7.9 mm ± 0.4 mm

8.0 - 11.9 mm ± 0.5 mm

12.0 - 13.0 mm ± 0.6 mm

Panels with Hexa surface:

Thicknesses Tolerances (EN 438-6, 5.3)

6.0 - 7.9 mm ± 0.4 mm

8.0 - 11.9 mm ± 0.5 mm

12.0 - 15.9 mm ± 0.6 mm

16.0 - 20.0 mm ± 0.7 mm

Panels with sanded-reverse side:

For symmetrically structures sandwich elements.

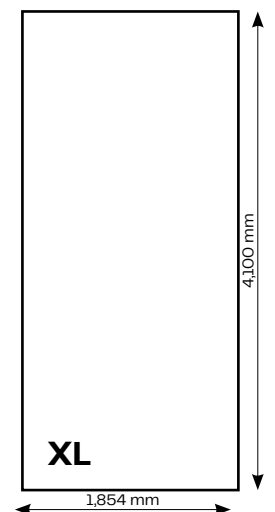
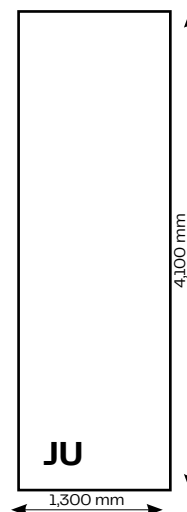
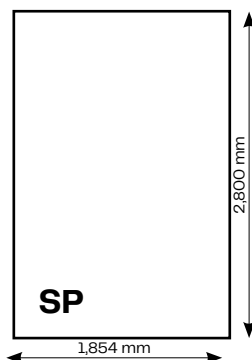
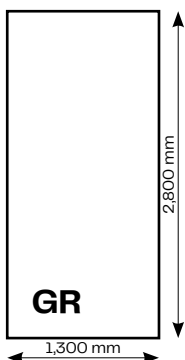
Thicknesses Tolerances (EN 438-6, 5.3)

2.0 - 2.9 mm ± 0.2 mm

3.0 - 4.0 mm ± 0.3 mm

In order to be able to design the inner sides of balconies with a uniformly light look, it is also possible to produce Max Compact Exterior panels with a white (rear) side using decor O890 NT - Balcony white. As a result of the differing decor structure, the fastening spacings given in our Technical Information brochures should be reduced by about 15 %.

Formats (production sizes)



Tolerances +10 - 0 mm (EN 438-6, 5.3)

Panel formats are production formats. If exact dimensions and angles are necessary, we recommend an all-sided blank. Depending on the method of trimming, net size is reduced by approx. 10 mm.

Fundermax Deutschland GmbH

Mundenheimer Weg 2
D-67117 Limburghof
infoGermany@fundermax.biz
www.fundermax.com

Fundermax France S.a.r.l.

3 Cours Albert Thomas
F-69003 Lyon
Telephone: +33 (0)4 78 68 28 31
infoFrance@fundermax.biz
www.fundermax.com

Fundermax India Pvt. Ltd.

Sy. No. 7, Honnenahalli, Doddballapur Road,
IND-Yelahanka Hobli, Bangalore – 560064
officeIndia@fundermax.biz
www.fundermax.com

Fundermax Italia s.r.l.

Viale Venezia 22
I-33052 Cervignano del Friuli
infoItaly@fundermax.biz
www.fundermax.com

Fundermax North America, Inc.

9401-P Southern Pine Blvd.
US-Charlotte, NC 28273
Telephone: +1 (0)980 299 0035
office.america@fundermax.biz
www.fundermax.com

Fundermax Polska Sp.z.o.o.

ul. Rybitwy 12
PL-30 722 Kraków
Telephone: +48 (0)12 65 34 528
infoPoland@fundermax.biz

Fundermax Russia Show:room

of.203, bld.2, 10, Nizhnyaya
Syromyatnicheskaya str.
RU-Moscow, 105120
Telephone: +7 (0)499 130 30 94
fundermax.ru@fundermax.biz
www.fundermax.com

Fundermax Swiss AG

Industriestrasse 38
CH-5314 Kleindöttingen
Telephone: +41 (0)56 268 83 11
infoswiss@fundermax.biz
www.fundermax.com

Fundermax GmbH

Klagenfurter Straße 87-89, A-9300 St. Veit/Glan
T: +43 (0)5 9494-0, F: +43 (0)5 9494-4200
office@fundermax.at
www.fundermax.at